

Spectralink IP-DECT Server 200



Single-Cell DECT Mobility Solution for Small Businesses and Remote Sites

Spectralink offers an enterprise-grade, highly secure single-cell IP-DECT solution that can grow with your business – providing mobility for users within specific areas of any work environment.

The Spectralink IP-DECT Server 200 comes out of the box with support for up to 12 wireless DECT users supporting six simultaneous calls. This scalability ensures that the Spectralink IP-DECT Server 200 can grow with your business to fit your changing needs, making it a highly flexible, easy-to-use solution.

The Spectralink IP-DECT Server 200 can be deployed as a mobility solution for SOHO/ROBO/SMB businesses, or can be deployed across a series of smaller branch sites or outlets for a large distributed enterprise such as a retail store chain.

The single-cell solution is designed for plug-&-play deployment and is easy to deploy and install because of Spectralink's redirection technology that enables you to deliver a Zero-Touch customer experience. Moreover, it is ideal for integration with all leading hosted UC/UCaaS platforms as it has been designed for remote provisioning and configuration, easy firmware rollout using software update over the air (SUOTA), and wireless users.

The system scales up to 12 users, and when there is a need for coverage across multiple locations, the solution can be easily deployed to support that. Radio coverage can be further expanded using up to three Spectralink DECT Repeaters or using Spectralink's external antenna*, an ideal choice for expanding coverage in normally inaccessible areas such as hallways, freezing rooms, etc.

The single-cell solution has a broad appeal across a number of vertical markets. Businesses requiring cost-effective yet enterprise-grade, highly secure mobility solutions will appreciate the simplicity and the radio coverage range provided by the Spectralink IP-DECT Server 200.

The solution is ideal for users in retail markets, such as stores, petrol stations, car dealerships, fast-food chains, retail banks, or smaller health care locations, such as clinics, dental or medical offices, pharmacies, and other small businesses.

Benefits

- Supports 12 users and six simultaneous calls
- Interoperable with market leading Call Control and Unified Communications (UC/UCaaS) platforms
- Delivers high-quality and secure voice communication
- Supports enterprise grade security & management
- Supports DECT Enhanced Security (Encryption)
- Enhance coverage via repeaters and external antenna
- Increases functionality and business efficiency by integrating with Eco-System application partner solutions
- Can be installed in multiple locations to ensure mobility for large geographically distributed enterprise businesses
- Supports entire Spectralink DECT Handset product portfolio
- Optional license for integration with Microsoft Teams



*ITSP = Internet Telephony Service Provider, CSP = Communications service providers.

*Spectralink external antenna is the only approved antenna for the Spectralink IP-DECT Server 200. Connecting 3rd party external antennas are not supported and will not work.

Specifications

Protocol Support

- Session Initiated Protocol (SIP)
 - Broadcast Messaging
 - Message Service Functions (MSF)
 - XML-RPC
 - OAM-REST-API

SIP VoIP Support

- Basic call
- Caller ID
- Call Hold
- Call Transfer
- Call Waiting
- Music on Hold (MOH)

Note: Additional voice calling features dependent on host SIP-PBX (Call control platform)

Operation And Maintenance

- Web GUI for administration and maintenance of the entire infrastructure
- HTTP with digest authentication
- HTTPS
- Syslog
- SNMP v2

System Architecture

- The Spectralink IP-DECT Server 200 is both a radio unit (RFP) and a SIP integration unit to the host SIP Call Control / UC platform.
- Single-cell configuration ONLY:
 - 1 x Spectralink IP-DECT Server 200 and
- Up to 3 x Spectralink DECT Repeaters
 - 12 wireless users / 6 simultaneous calls (codec independent)

Supported Codecs

- G.711 A-law and U-law
- G.726 (32 kbps - 4-bit ADPCM)
- G.729

Network

- 10/100 Mbps Ethernet port
- Manual or dynamic host configuration protocol (DHCP)
- Time and date synchronization using Network Time Protocol (NTP)
- LED status indication

Provisioning

- Configuration
- User data
- Server firmware
- Handset firmware

Enhanced Provisioning

- The unit can be programmed to download its own configuration and user settings as well as handset firmware and then update the handset firmware based on a programmed schedule (e.g., upgrade at 03:00)

Note: Scheduled firmware update to all the handsets is accomplished via SUOTA, providing totally automated firmware roll-out support to update IP-DECT Server 200 and all connected handset.

Radio Interface

- Average transmit power: typical 5mW/ch (US) or 10mW/ch. (EU)
- Peak transmit power: typical 125mW (US) or 250mW (EU)
- RF output 20 to 24 dBm at the antenna connection
- Sensitivity: typical -90 dBm measured at antenna connection at BER = 0.001
- Typical range:
 - Indoor: Up to 50m distance (150 feet)
 - Open areas: Up to 300m distance (1,000 feet)
- Possible to connect an external antenna (Only approved Spectralink external antenna can be used)

Application Protocols

- XML-RPC API supporting:
 - Broadcast Messaging
 - Message Service Functions (MSF)

Approvals (Regulatory Standards)

- Radio Equipment Directive 2014/53/EU
- Low Voltage Directive 2014/35/EU (CE)
- FCC 47 CFR Part 15

Safety (Regulatory Standards)

- UL62368-1 CAN/CSA-C22.2 No. 62368-1
- IEC 62368-1
- AS/NZS 62368-1
- EN 62368-1

Please check our [support site](#) for the latest approvals and regulatory compliance.

Environmental Conditions

- Operating temperature: 10° - 40° C (50° - 104° F)
- Storage temperature: -50° - 70° C (-58° - 158° F)
- Relative humidity: between 20% and 80% (non-condensing)
- The equipment is in compliance with the requirements of EU directive 2011/65/EU (RoHS) and 2012/19/EU (WEEE)

Electrical Requirements

- Power over Ethernet (IEEE 802.3af), mode A & B
- PoE Class 1 device
- Typical power consumption: 3W per unit
- External power outlet (power supply must be ordered separately)

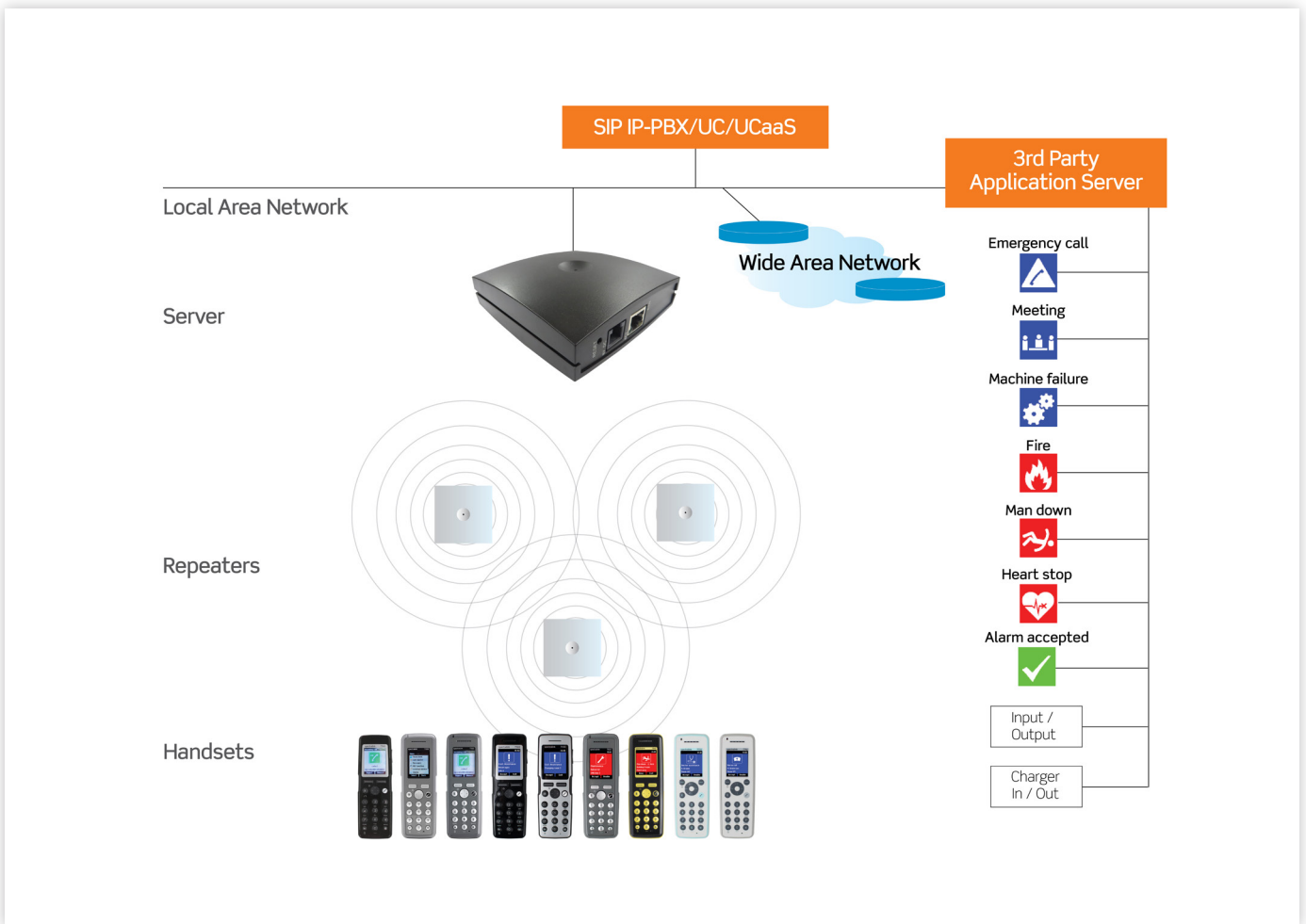
Physical Characteristics

- Size: 100 x 100 x 43 mm (3.94 x 3.94 x 1.69 in.)
- Weight: 120 gr. (4.2 oz)
- Black (Pantone Black)
- Wall-mountable, indoor
- The server can be mounted upside down

Interoperability

- For information about supported Call Control / Unified Communications (UC) & UCaaS platforms, visit support.spectralink.com.

Spectralink IP-DECT Server 200 Configuration



Note: All Spectralink DECT handsets are fully supported. Please get in touch with Spectralink sales to learn about the various 3rd party Application Server-based solutions available from our AIMS eco-system partners.

We support industries like yours...

MANUFACTURING & WAREHOUSING



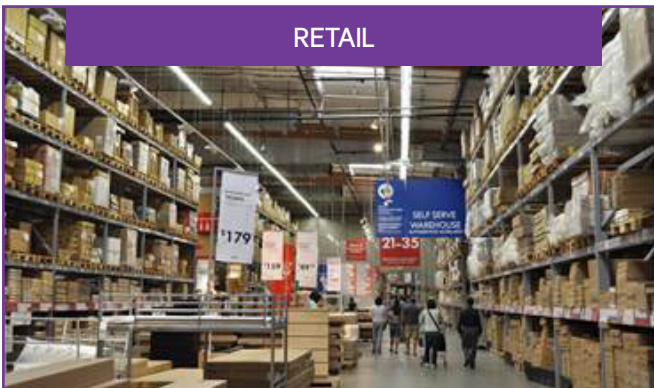
- Instant notifications make users aware of potentially hazardous situations
- Lone workers can send alarms in case of emergency together with user location.
- Notification in case of machine failure reduces production downtime

ELDERLY CARE



- Roam freely with voice and security all within reach
- Communicate clearly with access to tools like nurse call monitoring, patient monitoring and workflow apps
- Keep up with the demands of the day with a highly durable handset
- Easily cleanable handset in healthcare facilities

RETAIL



- Streamline operations at every stage of the retail and customers journey
- Send tasks to associates so that they can accept the task based on their schedule and report when the task is done/complete
- Send secure messages (HQ to all branches) – with broadcast, group or individually targeted handsets

HOSPITALITY



- Stay in touch with colleagues no matter their location
- Keep up with the demands of the day with a highly durable handset
- Send tasks to cleaning crew and confirm when rooms are ready for the arriving guests.
- Share guest insights in an instant to deliver highly personalized experiences

Complete your Spectralink DECT Solution

Protect and enhance the value of your Spectralink mobility solution with Software Assurance

Spectralink Software Assurance is specifically designed to complement and protect your existing Spectralink DECT solution. Software Assurance entitles you to all available software upgrades, including new features, service updates and security enhancements to mitigate the risk of data loss/breach over your subscription period.

De-risk your investment with Spectralink Professional Services

Design	Deploy
Strategize your path to success. We analyze and assess your needs based on your business goals, end-user requirements, and existing IT infrastructure to start the process. Then we work with you to map out an effective strategy that brings together the right combination of mobile devices, applications, and technology.	Align and activate your solution. We help put your plan into action with a thorough implementation process that includes configuring, implementing, and testing all aspects of your technical environment. We also provide comprehensive training to help prepare and position your employees for mobile success.

About Spectralink

As an award winner in mobile technology, Spectralink has been transforming the way our customers work and communicate for 30 years. Through our determination to do extraordinary things, we enable mobile workforces and empower our customers and partners to explore what's next, what's possible. With our enterprise grade, best-in-class mobile solutions, we are with our customers wherever they work, however they need us. Our people, commitment to innovation and our passion are our foundation for success.

spectralink.com
info@spectralink.com
+1 800-775-5330 North America
+45 7560 2850 EMEA