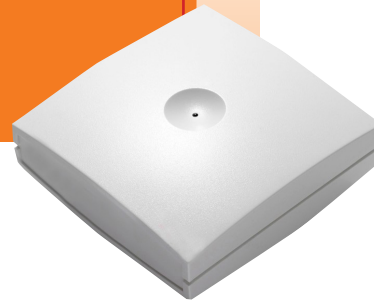


# Spectralink DECT External Antenna



## Extend Your DECT Wireless Coverage

The Spectralink External Antenna extends the coverage of the Spectralink Base Station and IP-DECT Base Station in areas where it is difficult to install a base station. It's highly directional making it a great tool to extend coverage in challenging locations. The external antenna can also connect to the Spectralink Repeater.

### Configuration

When connected, the external antenna is automatically configured to the Base Stations and IP-DECT Server 200 and 400 models. In the DECT server UI, you can select the antenna configuration, and enable the radio on the base station, the external antenna, or both simultaneously. Please find more relevant information in the configuration guide at [www.support.spectralink.com](http://www.support.spectralink.com).

### Repeater

When connecting the external antenna to a repeater, the external antenna does not provide coverage for handsets, and it can only be used to extend the synchronization link.

## Specifications

### Electrical Properties

- Frequency range: 1880-1930 MHz
- Impedance: 50  $\Omega$  (DC-path to ground)
- Polarization: RHCP
- Gain: 7.5 - 8.0 dBi
- 3 dB beamwidth horizontal: > 62°
- 3 dB beamwidth vertical: > 62°
- Front to back ratio: > 8 dB
- Return loss: < 15 dB
- Connector: SMB male
- One meter cable included
- Optional 7.5 meter cable

### Environmental Conditions

- Operating temperature: -4° - 131° F (-20° - 55° C)
- Storage temperature: -40° - 185° F (-40° - 85° C)

### Physical Characteristics

- Size: 4 x 4 x 1.7 in. (100 x 100 x 42 mm)
- Weight: 4.2 oz. (120 gr.)
- For indoor installation

## About Spectralink

As an award winner in mobile technology, Spectralink has been transforming the way our customers work and communicate for 30 years. Through our determination to do extraordinary things, we enable mobile workforces and empower our customers and partners to explore what's next, what's possible. With our enterprise grade, best-in-class mobile solutions, we are with our customers wherever they work, however they need us. Our people, commitment to innovation and our passion are our foundation for success.

spectralink.com  
info@spectralink.com  
+1 800-775-5330 North America  
+45 7560 2850 EMEA